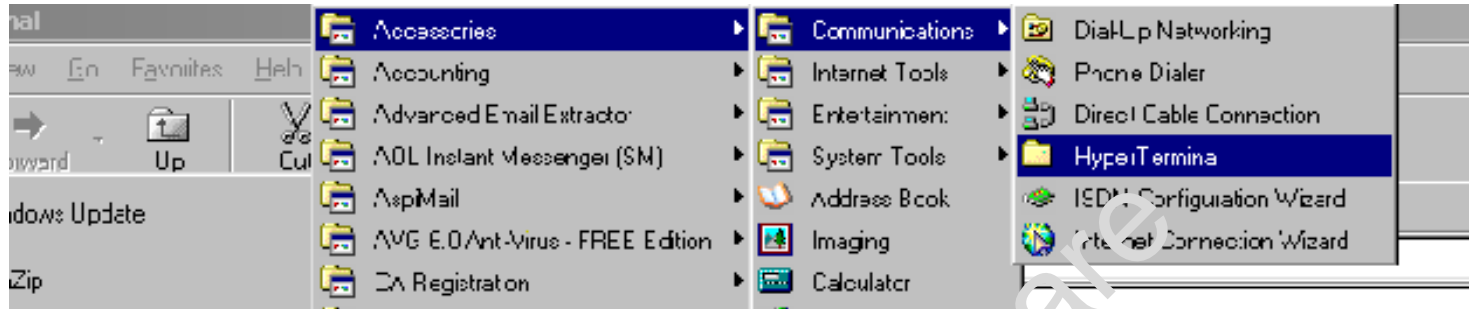


How to test your GSM device/SIM card using Hyperterminal.

To test if your GSM device, phone or GSM modem can work with VisualGSM, you can use Window's hyperterminal.

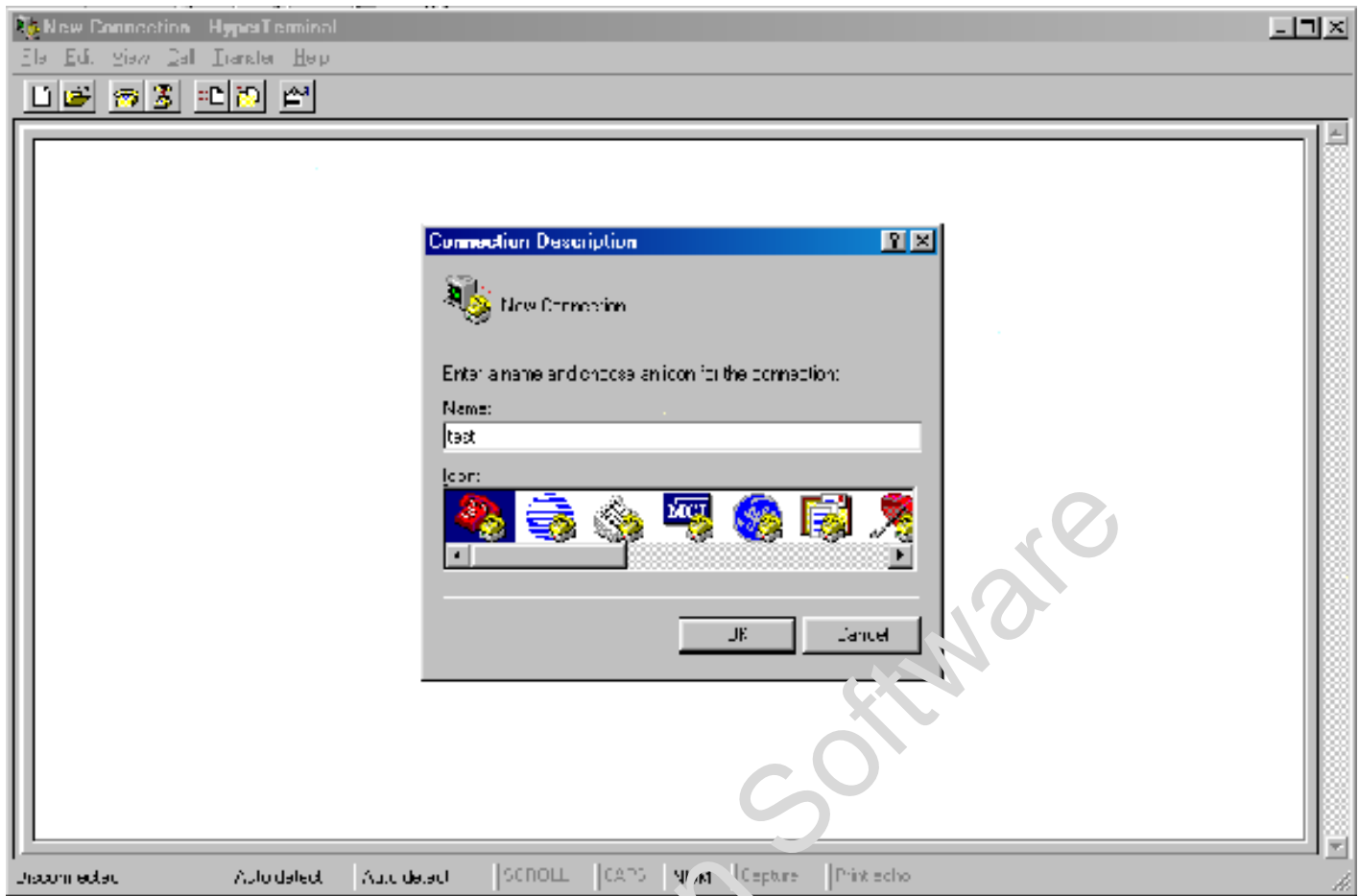
1). Start Hyperterminal as shown below:-



2). Connect your GSM device to a COM port, e.g. COM port 1. Ensure that there is sufficient COM ports in the first place. For IrDA or infrared connection, please ensure that your IrDA port is mapped to a serial port, e.g. COM4 is commonly used by IrDA. Some mobile devices can only be connected via IrDA, e.g. Nokia 8210.

(Note: IrDA is used by only VisualGSM Lite. If you are using IrDA on Win2k, you may need to install a patch. You can download the patch from Lite download page.)

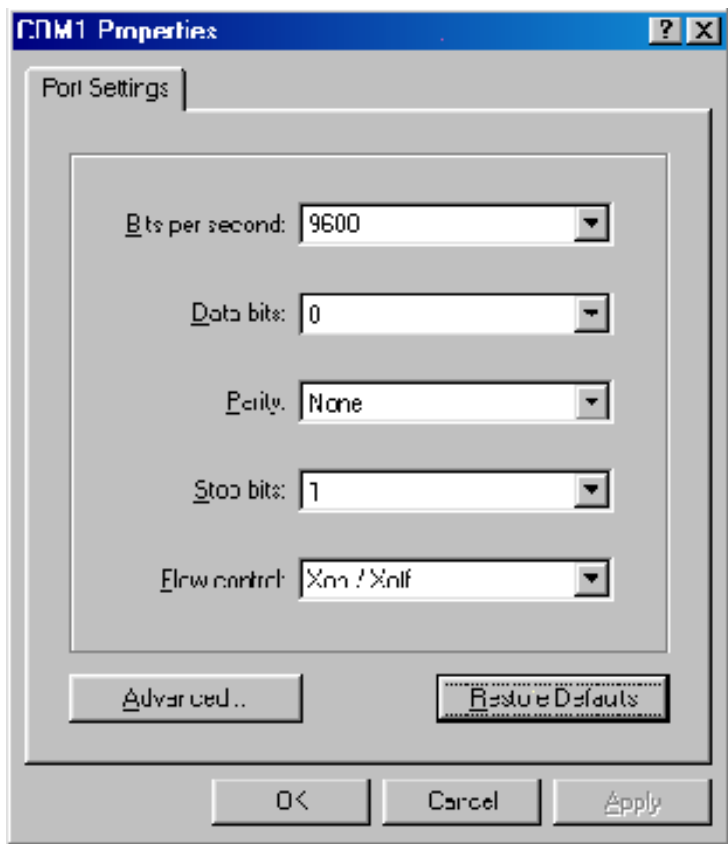
3). Enter a name for the connection, e.g. test.



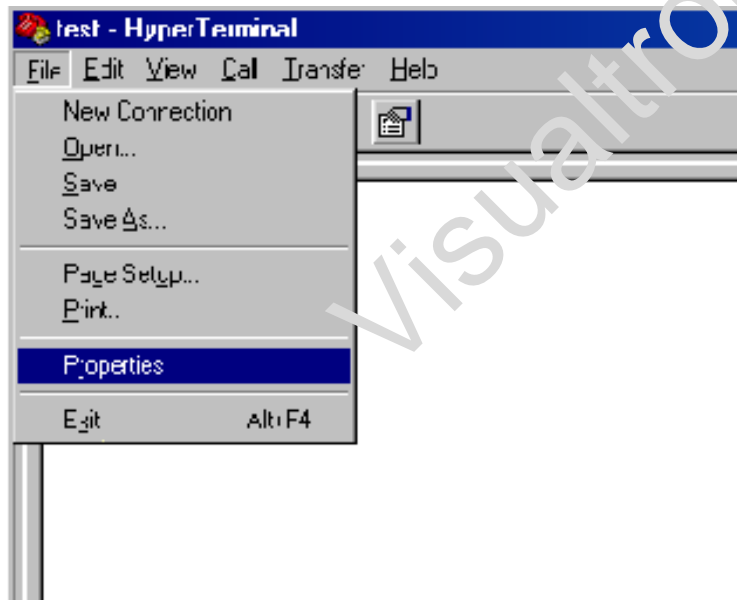
4). Select COM port 1, if you device is connected to COM 1. If you are not sure, you can try the other COM ports.



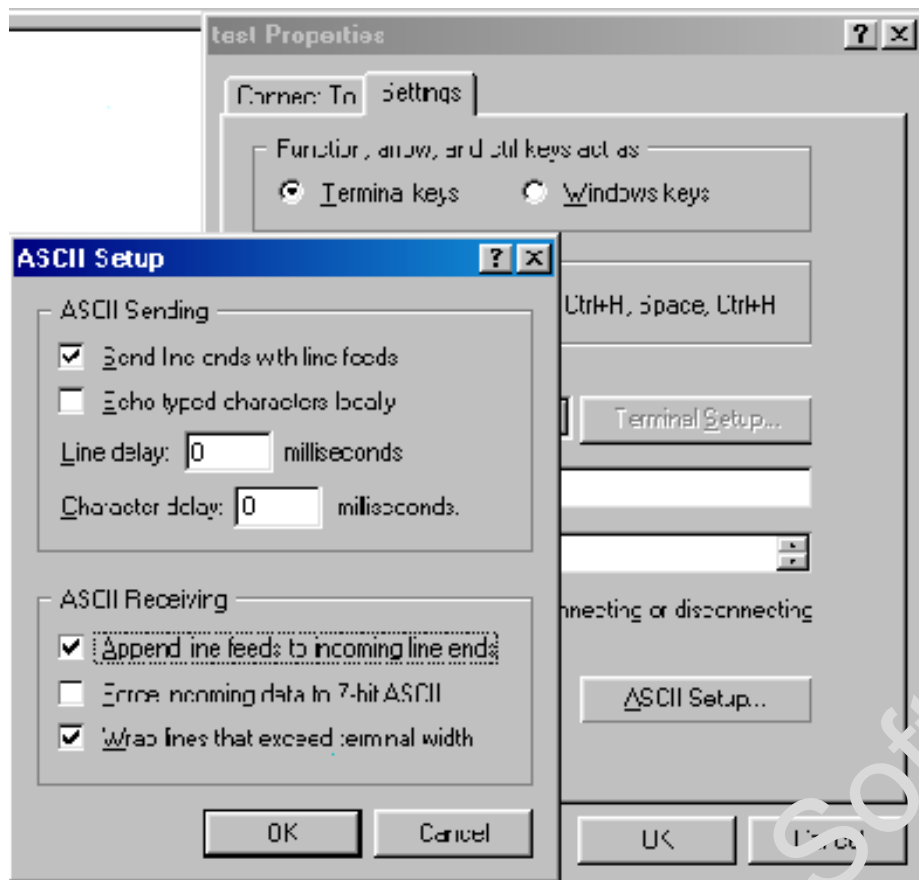
5). Click restore default. If you are using a mobile phone via data cable, you may need to change the baud rate to 19200 Bits per second.



6). Go to File - Properties.



7). Click on Settings tab, select ASCII Setup. Ensure that "Append line feeds to incoming line ends", "Wrap lines that exceed terminal width", and "Send line ends with line feeds" are checked.



8.) Test your connection by issuing AT, and AT+CPIN. If you get OK and +CPIN: READY as response, then your device is ready for use with VisualGSM Enterprise. If you cannot get the response as shown below, please check with other ports, and baud rate combinations.

